

Balade

Revisão: Nicolau Salles

♩ = 90

Musical score for 'Balade' in 4/4 time, key of D major. The score is for a chamber ensemble consisting of Flauta, Flauta doce, Clarinete em Sib 2, Clarinete em Sib, Violino 1, Violino 2, Viola, Violoncelo, and Contrabaixo. The tempo is marked as ♩ = 90. The score is divided into two systems of five staves each. The first system includes Flauta, Flauta doce, Clarinete em Sib 2, Clarinete em Sib, and Violino 1. The second system includes Violino 2, Viola, Violoncelo, and Contrabaixo. The Flauta part begins with a rest, followed by a melody starting on the second measure. The Flauta doce part also begins with a rest, followed by a melody starting on the second measure. The Clarinete em Sib 2 part begins with a rest, followed by a melody starting on the second measure. The Clarinete em Sib part begins with a rest, followed by a melody starting on the second measure. The Violino 1 part begins with a rest, followed by a melody starting on the second measure. The Violino 2 part begins with a rest, followed by a melody starting on the second measure. The Viola part begins with a rest, followed by a melody starting on the second measure. The Violoncelo part begins with a rest, followed by a melody starting on the second measure. The Contrabaixo part begins with a rest, followed by a melody starting on the second measure. The score includes dynamic markings such as *pp*, *f*, *pizz.*, and *mf*.

Flauta

Flauta doce

Clarinete em Sib 2

Clarinete em Sib

Violino 1

Violino 2

Viola

Violoncelo

Contrabaixo

7

Fl.
Fl. d.
Cl. 2
Cl.
Vno. 1
Vno. 2
Vla.
Vc.
Cb.

arco pizz.

Detailed description: This block contains the musical score for measures 7 through 13. The score is for a symphony orchestra. The woodwinds include Flute (Fl.), Flute in D (Fl. d.), Clarinet in C (Cl.), and Clarinet in Bb (Cl. 2). The strings include Violin 1 (Vno. 1), Violin 2 (Vno. 2), Viola (Vla.), Violoncello (Vc.), and Contrabass (Cb.). The key signature has one sharp (F#) and the time signature is 4/4. The woodwinds and strings play a melodic line, while the brass parts are mostly rests. The Violoncello part has 'arco' and 'pizz.' markings.

14

Fl.
Fl. d.
Cl. 2
Cl.
Vno. 1
Vno. 2
Vla.
Vc.
Cb.

arco

Detailed description: This block contains the musical score for measures 14 through 16. The instrumentation and key signature remain the same as in the previous block. In measure 14, the Flute (Fl.) and Clarinet in Bb (Cl.) play a melodic line. In measure 15, the Flute (Fl.) and Clarinet in Bb (Cl.) play a melodic line. In measure 16, the Flute (Fl.) and Clarinet in Bb (Cl.) play a melodic line. The Violoncello (Vc.) part has an 'arco' marking.

17

Fl.

Fl. d.

Cl.2

Cl.

Vno. 1

Vno. 2

Vla.

Vc.

Cb.

Detailed description: This page of a musical score contains measures 17 through 20. The score is for a woodwind and string ensemble. The woodwind section includes a Flute (Fl.), Flute in D (Fl. d.), Clarinet 2 (Cl.2), and Clarinet (Cl.). The string section includes Violin 1 (Vno. 1), Violin 2 (Vno. 2), Viola (Vla.), Violoncello (Vc.), and Contrabass (Cb.). The music is in the key of D major and 4/4 time. Measure 17 features a flute melody with eighth notes and rests. The clarinet and violin parts have similar rhythmic patterns. The string section provides harmonic support with sustained notes and moving lines. The score concludes with a double bar line at the end of measure 20.

Balade

Flauta

Revisão: Nicolau Salles

♩ = 90

pp

7

4

15

Balade

Flauta doce

Revisão: Nicolau Salles

♩ = 90



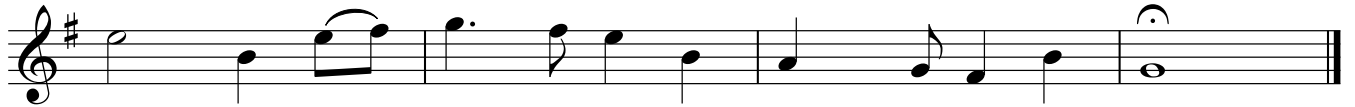
7



13



17



Balade

Revisão: Nicolau Salles

$\text{♩} = 90$

f

7

14

Balade

Clarinete em Sib

Revisão: Nicolau Salles

♩ = 90

pp

8

14

2

Balade

Violino 1

Revisão: Nicolau Salles

♩ = 90

f

7

14

Balade

Violino 2

Revisão: Nicolau Salles

♩ = 90

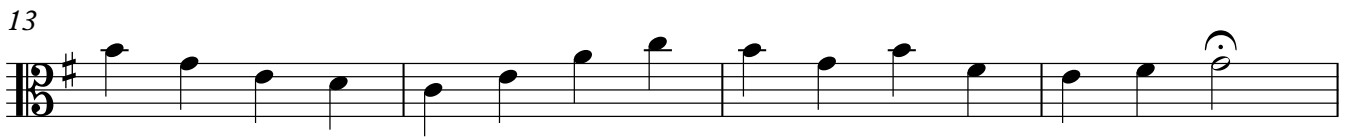


Balade

Viola

Revisão: Nicolau Salles

♩ = 90



Balade

Violoncelo

Revisão: Nicolau Salles

♩ = 90

pizz.

mf

6 arco

12 pizz.

16 arco

Balade

Contrabaixo

Revisão: Nicolau Salles

♩ = 90

