

# Flauta Doce Contralto **Fum, Fum, Fum**

Rev. 13/12/2023

Tradicional da Catalunha

**A**

♩ = 110

Musical notation for section A, measures 1-7. The piece is in 2/4 time. The melody consists of eighth and quarter notes with various accidentals (sharps and naturals).

8

**B**

Musical notation for section B, measures 8-16. Measures 8-15 contain a sequence of eighth notes. Measure 16 has a whole note with a '2' above it. Measures 17-18 are rests in 3/4 and 2/4 time signatures.

17

**C**

Musical notation for section C, measures 17-24. Measures 17-18 are first and second endings. Measures 19-24 continue the melody with eighth and quarter notes.

25

**D**

Musical notation for section D, measures 25-33. Measures 25-32 contain eighth notes. Measure 33 has a whole note with a '2' above it. Measures 34-35 are rests in 3/4 and 2/4 time signatures.

34

**E**

Musical notation for section E, measures 34-40. Measures 34-40 contain eighth notes.

41

**F**

⊕  
D.C.

6

Flauta Doce Soprano

Musical notation for section F, measures 41-47. Measures 41-46 contain eighth and quarter notes. Measure 47 has a whole note with a '6' above it. The piece ends with a double bar line.

Flauta Doce Tenor

# Fum, Fum, Fum

Rev. 13/12/2023

Tradicional da Catalunha

**A**

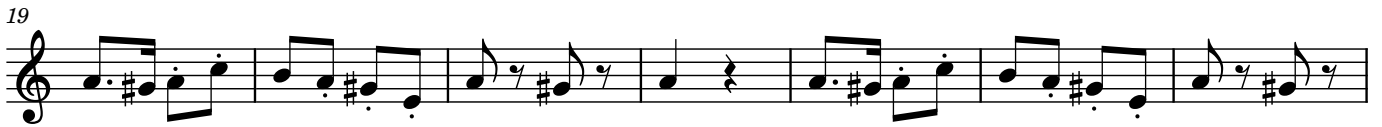
♩ = 110



**B**



**C**



**D**



**E**



**F**



D.C.

**4**

solo



52



Flauta Transversal

# Fum, Fum, Fum

Rev. 13/12/2023

Tradicional da Catalunha

**A**

$\text{♩} = 110$

8 **B**

17 **C**

1. 2.

25 **D**

32 **E**

39 **F** D.C.

45 **F** solo p ff

Violino 1

# Fum, Fum, Fum

Rev. 13/12/2023

Tradicional da Catalunha

**A**

$\text{♩} = 110$

8

**B**

19

**C**

26

**D**

33

**E**

39

D.C.

**F**

45

Violino 2

# Fum, Fum, Fum

Rev. 13/12/2023

Tradicional da Catalunha

**A**

$\text{♩} = 110$

*f* *div.*

**B**

8 *p* 4 unis. 1. 2.

**C**

19 *f*

**D**

26

**E**

33

39 *div.* *unis.* D.C.

**F**

45 6 *ff*

Viola

# Fum, Fum, Fum

Rev. 13/12/2023

Tradicional da Catalunha

**A**

♩ = 110

Musical notation for section A, starting at measure 1. The key signature has one sharp (F#) and the time signature is 3/4. The music begins with a forte (*f*) dynamic. The notation includes eighth and quarter notes with various accidentals.

8

**B**

1.

Musical notation for section B, starting at measure 8. It features a first ending bracket labeled '1.' at the end. Dynamics include *pp* and *p*. The time signature changes from 3/4 to 2/4 and back to 3/4.

18

**C**

2.

Musical notation for section C, starting at measure 18. It features a second ending bracket labeled '2.' at the beginning. The music is marked with a forte (*f*) dynamic.

27

**D**

Musical notation for section D, starting at measure 27. The time signature changes from 3/4 to 2/4 and back to 3/4.

34

**E**

Musical notation for section E, starting at measure 34. The time signature changes from 3/4 to 2/4.

41

**F**

⊕

D.C.

6

Musical notation for section F, starting at measure 41. It includes a double bar line with a repeat sign, a first ending bracket labeled '6', and a forte (*ff*) dynamic. The time signature changes from 2/4 to 3/4.

Violoncello

# Fum, Fum, Fum

Rev. 13/12/2023

Tradicional da Catalunha

**A**

♩ = 110

8

**B**

3

soli

*mf*

17

1.

2.

*mp*

*f*

**C**

26

**D**

33

**E**

40

**F**

⊕

D.C.

6

*ff*

52

Contrabaixo 1

# Fum, Fum, Fum

Rev. 13/12/2023

Tradicional da Catalunha

**A**

♩ = 110

8

**B**

4

**C**

marcato

20

**D**

28

**E**

36

**F**

⊕

D.C.

6

42



Contrabaixo 2

# Fum, Fum, Fum

Rev. 13/12/2023

Tradicional da Catalunha

**A**

♩ = 110

*f*

8

**B**

6

**C**

1.

2.

marcato

*f*

21

**D**

29

**E**

36

**F**

⊕

D.C.

6

*ff*

42