

2 Chorales

BWV 244

J. S. Bach

Instrumentação: Miguel

Herzliebster Jesu, was hast du verbrochen

(8-----)

Flauta Doce
Contralto

Clarone em Sib

Saxofone Alto

Saxofone Tenor

Violino 1

Violino 2

Violoncelo 1

Violoncelo 2

Contrabaixo

Violões

8-----

This musical score page contains measures 6, 7, and 8 for a woodwind and string ensemble. The instruments are arranged in two systems. The first system includes Flute (fl.), Clarinet (Clr.), Saxophone Alto (Sax. A.), and Saxophone Tenor (Sax. T.). The second system includes Violin 1 (Vln. 1), Violin 2 (Vln. 2), Viola 1 (Vc. 1), Viola 2 (Vc. 2), Contrabass (Cb.), and Violoncello (Viol.). The music is written in treble clef for the woodwinds and violins, and bass clef for the lower strings. The key signature is three sharps (F#, C#, G#). Measure 6 begins with a rehearsal mark '6' and a first ending bracket. Measure 8 ends with a rehearsal mark '8' and a second ending bracket. The woodwinds play melodic lines with various articulations, while the strings provide harmonic support with sustained notes and rhythmic patterns.

10

fl.

Clr.

Sax. A.

Sax. T.

Vln. 1

Vln. 2

Vc. 1

Vc. 2

Cb.

Viol.

8

Ich bin's, ich sollte büßen

Flauta Doce
Contralto

Clarone em Sib

Saxofone Alto

Saxofone Tenor

Violino 1

Violino 2

Violoncelo 1

Violoncelo 2

Contrabaixo

Violões

The image displays a musical score for the piece "Ich bin's, ich sollte büßen". The score is arranged in a system of ten staves, each representing a different instrument. The instruments are: Flauta Doce Contralto, Clarone em Sib, Saxofone Alto, Saxofone Tenor, Violino 1, Violino 2, Violoncelo 1, Violoncelo 2, Contrabaixo, and Violões. The music is written in a key signature of three flats (B-flat, E-flat, A-flat) and a common time signature (C). The notation includes various rhythmic values, such as eighth and sixteenth notes, and rests. The score is presented in a clean, black-and-white format, typical of a printed musical score.

6

fl.

Clr.

Sax. A.

Sax. T.

Vln. 1

Vln. 2

Vc. 1

Vc. 2

Cb.

Viol.

8

10

fl.

Clr.

Sax. A.

Sax. T.

Vln. 1

Vln. 2

Vc. 1

Vc. 2

Cb.

Viol.

8

Detailed description: This page of a musical score, page 6, contains measures 10 through 13. The score is for a symphony orchestra and includes parts for Flute (fl.), Clarinet (Clr.), Saxophone A (Sax. A.), Saxophone T (Sax. T.), Violin 1 (Vln. 1), Violin 2 (Vln. 2), Viola 1 (Vc. 1), Viola 2 (Vc. 2), Cello (Cb.), and Violoncello (Viol.). The music is written in a key signature of three flats (B-flat, E-flat, A-flat) and a common time signature. The flute part begins with a measure rest and then plays a series of notes. The clarinet and saxophone parts have more complex rhythmic patterns. The string parts (Violins, Violas, Cellos) provide a harmonic and rhythmic foundation. The page number '6' is in the top left, and the measure number '10' is at the start of the first staff. A page number '8' is at the bottom left.

Flauta Doce Contralto

2 Chorales

BWV 244

J. S. Bach
Instrumentação: Miguel

Herzliebster Jesu, was hast du verbrochen

(8-----)



Ich bin's, ich sollte büßen



Clarone em Sib

2 Chorales

BWV 244

J. S. Bach
Instrumentação: Miguel

Herzliebster Jesu, was hast du verbrochen



Ich bin's, ich sollte büßen



Saxofone Alto

2 Chorales

BWV 244

J. S. Bach
Instrumentação: Miguel

Herzliebster Jesu, was hast du verbrochen



Ich bin's, ich sollte büßen



Saxofone Tenor

2 Chorales

BWV 244

J. S. Bach
Instrumentação: Miguel

Herzliebster Jesu, was hast du verbrochen



Ich bin's, ich sollte büßen



Violino 1

2 Chorales

BWV 244

J. S. Bach
Instrumentação: Miguel

Herzliebster Jesu, was hast du verbrochen



Ich bin's, ich sollte büßen



Violino 2

2 Chorales

BWV 244

J. S. Bach
Instrumentação: Miguel

Herzliebster Jesu, was hast du verbrochen



Ich bin's, ich sollte büßen



Violoncelo 1

2 Chorales

BWV 244

J. S. Bach

Instrumentação: Miguel

Herzliebster Jesu, was hast du verbrochen



Ich bin's, ich sollte büßen



2 Chorales

BWV 244

J. S. Bach
Instrumentação: Miguel

Herzliebster Jesu, was hast du verbrochen



Ich bin's, ich sollte büßen



Contrabaixo

2 Chorales

BWV 244

J. S. Bach
Instrumentação: Miguel

Herzliebster Jesu, was hast du verbrochen



Ich bin's, ich sollte büßen



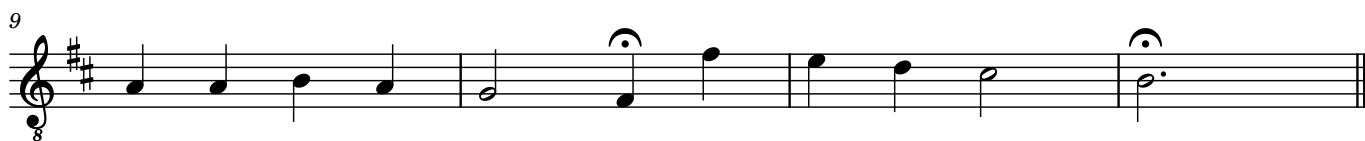
Violões

2 Chorales

BWV 244

J. S. Bach
Instrumentação: Miguel

Herzliebster Jesu, was hast du verbrochen



Ich bin's, ich sollte büßen

