

The War is Over

John Lennon

Arr. Adelmo Nascimento

$\text{♩} = 80$

Flauta Transversal

Flauta Doce

Flauta Tenor

Clarinete em B \flat

Saxofone Alto

Violino *p*

Violino

Violoncelo *p*

Fagote *p*

Fagote *p*

Contrabaixo *p*

Violão

6 A

Fl.

Fl. Doce *pp*

Fl. Tenor *pp*

Cl. em B \flat *pp*

A. Alto *pp*

Vln. *p*

Vln. *p*

Vc. *f*

Fgt *f*

Fgt *p*

Contb. *p*

Viol.

11

Fl.

Fl. Doce

Fl. Tenor

Cl. em B \flat

A. Alto

Vln.

Vln.

Vc.

Fgt

Fgt

Contb.

Viol.

16 **B**

Fl.

Fl. Doce *mf*

Fl. Tenor

Cl. em Bb

A. Alto *f* *mf*

Vln. *p*

Vln.

Vc.

Fgt

Fgt

Contb.

Viol.

21 C

Fl.

Fl. Doce

Fl. Tenor

Cl. em B \flat

A. Alto

Vln.

Vln.

Vc.

Fgt

Fgt

Contb.

Viol.

mp

p

p

p

mf

mf

mf

mp

Fl.

Fl. Doce

Fl. Tenor

Cl. em B \flat

A. Alto

Vln.

Vln.

Vc.

Fgt

Fgt

Contb.

Viol.

Fl.

Fl. Doce

Fl. Tenor

Cl. em B \flat

A. Alto

Vln.

Vln.

Vc.

Fgt

Fgt

Contb.

Viol.

Detailed description: This page of a musical score, numbered 31, contains eleven staves for different instruments. The key signature is one sharp (F#). The Flute (Fl.) part is mostly rests. The Flute Doce (Fl. Doce) and Alto Saxophone (A. Alto) parts feature long, sustained notes with slurs. The Flute Tenor (Fl. Tenor) and Clarinet in B-flat (Cl. em B \flat) parts play a rhythmic eighth-note pattern. The Violin (Vln.) parts have a mix of sustained notes and rhythmic patterns. The Viola (Viol.) part plays a steady eighth-note accompaniment. The Double Bass (Vc.) and First Trombone (Fgt) parts have similar rhythmic patterns. The Second Trombone (Fgt) part has sustained notes. The Contrabass (Contb.) part plays a rhythmic eighth-note pattern. The Violin (Viol.) part plays a steady eighth-note accompaniment.

Musical score for various instruments. The score is in G major (one sharp) and 4/4 time. The instruments and their parts are:

- Fl. (Flute): Rests throughout the passage.
- Fl. Doce (Flute dolce): Melodic line starting with a half note G4, followed by quarter notes A4, B4, and a dotted half note G4.
- Fl. Tenor (Flute tenor): Melodic line starting with a half note G4, followed by quarter notes A4, B4, and a dotted half note G4.
- Cl. em Bb (Clarinet in Bb): Melodic line starting with a half note G4, followed by quarter notes A4, B4, and a dotted half note G4.
- A. Alto (Alto saxophone): Melodic line starting with a half note G4, followed by quarter notes A4, B4, and a dotted half note G4.
- Vln. (Violin): Melodic line starting with a half note G4, followed by quarter notes A4, B4, and a dotted half note G4.
- Vln. (Violin): Rhythmic accompaniment of eighth notes.
- Vc. (Viola): Rhythmic accompaniment of eighth notes.
- Fgt. (First Trombone): Rhythmic accompaniment of eighth notes.
- Fgt. (Second Trombone): Melodic line starting with a half note G4, followed by quarter notes A4, B4, and a dotted half note G4.
- Contb. (Double Bass): Rhythmic accompaniment of eighth notes.
- Viol. (Viola): Rhythmic accompaniment of eighth notes.

Dynamic markings include *mf* (mezzo-forte) and *f* (forte).

Fl. *p*

Fl. Doce *p*

Fl. Tenor *p*

Cl. em B \flat *p*

A. Alto *p*

Vln. *f*

Vln. *f*

Vc. *f*

Fgt. *p*

Fgt. *p*

Contb.

Viol.

Detailed description: This page of a musical score covers measures 41 to 45. The key signature is one sharp (F#), and the time signature is 4/4. The woodwind section includes Flute (Fl.), Flute in C (Fl. Doce), Flute in Bb (Fl. Tenor), Clarinet in Bb (Cl. em Bb), and Alto Saxophone (A. Alto). The string section consists of Violins (Vln.), Violoncello (Vc.), and Double Basses (Fgt.). The brass section includes Contrabass (Contb.) and Violoncello (Viol.). The flute parts play a rhythmic eighth-note pattern. The woodwinds and strings play sustained notes with some melodic movement. Dynamics are marked as piano (*p*) and forte (*f*).

46

Fl.

Fl. Doce

Fl. Tenor

Cl. em B \flat

A. Alto

Vln.

Vln.

Vc.

Fgt

Fgt

Contb.

Viol.

mf

p

p

mf

p

p

p

f

f

f

Musical score for page 51, featuring various instruments. The score is written in G major (one sharp) and 4/4 time. The instruments and their parts are:

- Fl. (Flute):** Treble clef, playing a melodic line with eighth and quarter notes.
- Fl. Doce (Flute dolce):** Treble clef, playing a melodic line with eighth and quarter notes.
- Fl. Tenor (Flute tenor):** Treble clef, playing a melodic line with eighth and quarter notes.
- Cl. em Bb (Clarinet in Bb):** Treble clef, playing a melodic line with eighth and quarter notes.
- A. Alto (Alto Saxophone):** Treble clef, playing a sustained melodic line with long notes.
- Vln. (Violins):** Treble clef, playing a sustained melodic line with long notes.
- Vc. (Viola):** Bass clef, playing a sustained melodic line with long notes.
- Fgt (Trumpets):** Bass clef, playing a melodic line with eighth and quarter notes.
- Contb. (Trombones):** Bass clef, playing a melodic line with eighth and quarter notes.
- Viol. (Violoncello):** Treble clef, playing a rhythmic accompaniment of chords.

Fl.

Fl. Doce

Fl. Tenor

Cl. em B \flat

A. Alto

Vln.

Vln.

Vc.

Fgt

Fgt

Contb.

Viol.

Fl. *mf*

Fl. Doce

Fl. Tenor

Cl. em B \flat

A. Alto *mf*

Vln. *mf*

Vln. *mf*

Vc. *mf* *p*

Fgt. *p*

Fgt. *mf* *p*

Contb. *mf* *p*

Viol.

Detailed description: This page of a musical score contains measures 61 through 64. The score is for a symphony or concert band. The instruments listed are Flute (Fl.), Flute in C (Fl. Doce), Flute in B-flat (Fl. Tenor), Clarinet in B-flat (Cl. em B \flat), Alto Saxophone (A. Alto), Violin (Vln.), Viola (Vc.), First Bassoon (Fgt.), Second Bassoon (Fgt.), Contrabass (Contb.), and Violoncello (Viol.). The key signature is one sharp (F#). The score includes various dynamics such as *mf* (mezzo-forte) and *p* (piano). The flute parts have rests in measures 62 and 63. The strings play a rhythmic accompaniment of eighth notes in measure 61, which changes to a more melodic line in measure 62. The bassoon and contrabass parts have melodic lines with dynamics *mf* and *p*. The violoncello part consists of chords in measure 61 and a melodic line in measure 62.

66

Fl.

Fl. Doce

Fl. Tenor

Cl. em B \flat

A. Alto

Vln.

Vln.

Vc.

Fgt

Fgt

Contb.

Viol.

Detailed description: This page of a musical score covers measures 66 to 70. The key signature is one sharp (F#). The woodwind section includes Flute (Fl.), Flute Dolce (Fl. Doce), Flute Tenor (Fl. Tenor), Clarinet in B-flat (Cl. em B \flat), and Alto Saxophone (A. Alto). The string section consists of Violins (Vln.), Violoncello (Vc.), and Contrabass (Contb.). There are two parts for Fagot (Fgt). The Violoncello, Fagot, and Contrabass parts feature long, sustained notes with slurs. The Violin parts play a melodic line with slurs. The Flute parts play a rhythmic pattern of eighth notes. The Alto Saxophone part plays a melodic line with slurs. The Violin part at the bottom plays a rhythmic pattern of eighth notes. The page number 66 is at the top left.

71

Fl.

Fl. Doce

Fl. Tenor

Cl. em B \flat

A. Alto

Vln.

Vln.

Vc.

Fgt

Fgt

Contb.

Viol.

Detailed description: This page of a musical score covers measures 71 and 72. The key signature is one sharp (F#). The woodwind section includes Flute (Fl.), Flute Dolce (Fl. Doce), Flute Tenor (Fl. Tenor), Clarinet in B-flat (Cl. em B \flat), and Alto Saxophone (A. Alto). The string section consists of Violins (Vln.), Violoncello (Vc.), and Fagot (Fgt). The percussion section includes Contrabass (Contb.) and Viola (Viol.). In measure 71, the woodwinds and strings play a sustained half-note chord. In measure 72, the woodwinds and strings continue with the same chord, while the Contrabass and Viola play a rhythmic pattern of quarter notes.

Flauta Transversal

The War is Over

John Lennon

Arr. Adelmo Nascimento

♩ = 80

A

pp

15 **B**

mf

16 **D**

p

42

mf

50

59

72

Flauta Doce

The War is Over

John Lennon

Arr. Adelmo Nascimento

8 $\text{♩} = 80$

A

pp

11 8

B

18 8

C

mp

28 8

D

p

43 8

p

50 8

57 8

65 8

||

Flauta Tenor

The War is Over

John Lennon

Arr. Adelmo Nascimento

♩ = 80

A

pp

11 **B**

18 **C**

p

25

32

D

39 *p*

48 *p*

55

62

Sax Alto

The War is Over

John Lennon

Arr. Adelmo Nascimento

J = 80

p *f*

17 *p*

30 *mf* *f*

44 *p*

58 *mf*

72

Violino

The War is Over

John Lennon

Arr. Adelmo Nascimento

♩ = 80

A **B**

p *p*

19 **C**

mf

31 **D**

f

43

p

59

mf *p*

Violoncello

The War is Over

John Lennon

Arr. Adelmo Nascimento

♩ = 80

A

p *f*

14 **B**

24 **C**

mf

34 **D**

p

48 *p*

64 *p*

Contrabaixo

The War is Over

John Lennon

Arr. Adelmo Nascimento

♩ = 80

A



9

B



18

C



27



36

D



45



54



64



violão

The War is Over

John Lennon

Arr. Adelmo Nascimento

$\text{♩} = 80$

8

8

15

22

29

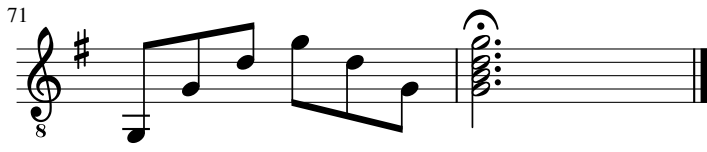
36

43

50

57

64



The War is Over

Clarinete Bb

John Lennon

Arr. Adelmo Nascimento

♩ = 80

pp

A

11

mf

B

19

p

C

28

35

f

D

43

mf

52

61

The War is Over

Violino 2

John Lennon

Arr. Adelmo Nascimento

♩ = 80

A

p

B

p

C

p

D

mf

f

p

mf

64

The War is Over

Fagote 1

John Lennon

Arr. Adelmo Nascimento

♩ = 80

p *f*

14

A

B

24

C

mf

34

D

p

47

f

56

p

67

The War is Over

Fagote 2

John Lennon

Arr. Adelmo Nascimento

♩ = 80

p *p*

A B

18

mp

C

36

mf *f*

D

50

59

mf *p*