

Super Fantastico

Cello

O Balão Magico

Arr. Adelmo Nascimento

$\text{♩} = 140$



f

10



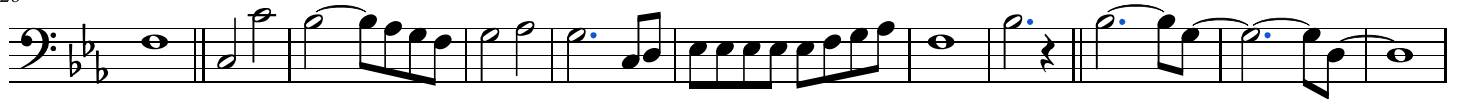
ff

18



f

26



f

37



f

47



f

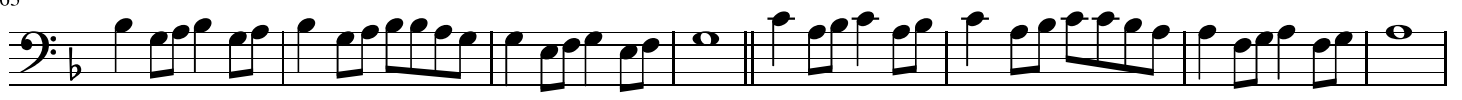
f

55



f

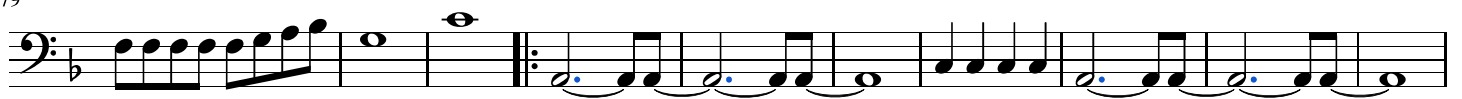
63



71



79



mf

Musical notation for a bass clef staff. The key signature is one flat (B-flat) and the time signature is 3/4. The notation includes a sequence of notes: four eighth notes (F, G, A, B), followed by a double bar line. Then, a half note (C), a quarter note (D), a quarter note (E), a half note (F), a quarter note (G), a quarter note (A), and a quarter note (B). This is followed by a repeat sign. Above the repeat sign are two boxes labeled '2.' and '3.'. The first ending (2.) consists of a half note (C), a quarter note (D), and a quarter note (E). The second ending (3.) consists of a half note (C), a quarter note (D), a quarter note (E), a quarter rest, a quarter note (F), a quarter note (G), a quarter note (A), a quarter note (B), a quarter rest, and a quarter note (C). The piece ends with a double bar line.